



S-5600

USER MANUAL

▲ Notice

Please read this manual before installation and operation.

! Safety precautions



Do not disassemble or alter the lock.

Disassembling the door lock may damage the product. Damages to the product caused by unauthorized persons may void the warranty.



If the product generates harmful gases and smoke.

Please remove the batteries immediately from the product, if you do not take this step immediately, the product may suffer severe damage.



Please keep the product away from water or any liquids.

If the product is exposed to water or liquids, please wipe the moisture off with a soft cloth. If moisture or foreign materials penetrate the product, remove the batteries immediately.



Please check the batteries every 6 months for leaks/cleanliness.

If leakage is discovered, please wipe out with a dry cloth and replace with new batteries. In case of exposure to leakage, wash affected skin area with soap and water immediately.



Do not clean the product with flammable materials such as alcohol, benzene or thinners.

Such materials may damage the surface of the lock or cause a fire.



Batteries should not be exposed directly to heat source or submerged in water, because they may leak or explode, resulting in severe damage.

Do not use damaged batteries.



Do not allow the battery electrodes to contact metals such as keys, as the battery may overheat, causing explosion or severe damage.



Please do not close the door with the deadbolt in the locked position.

It may damage the product or cause a malfunction.



Do not force to pull the front cover.

It may damage the product or cause a malfunction.



Do not mix old and new batteries, or use different types of batteries.

The battery life is getting shorter and it may cause leaks or explosion.



It may damage the product when installed on a heavy dew condensation door.

Dew condensation; small drops of water that form when warm air touches a cold surface. Please check the environment of installation area. Heavy dew condensation may damage the product or cause a malfunction.

Product features



Panic release handle type

It facilitates escape with a simple action of lever down.



High reliable mechanical mortise lock type



Free-direction mortise lock type

The product can be installed in a left or right handed configuration.



Auto relock function

If users do not open the door after unlocking the device it will lock itself automatically.



Volume control

8 levels of volume.



One touch mute function

Door will not emit any sound when mute is activated.



Low battery indicator and alarm for battery replacement

Easy to check battery status with three step level indicator and alarm when battery replacement is required.



Trespass alarm function

When the door is opened by force an alarm will sound.



Prevent mischief & hacking

After multiple incorrect attempted entries an alarm will sound and all the functions of the lock will be suspended for three minutes. The alarm activated after three incorrect PIN/card entries.



Three way solution (PIN code, Card key, Override key)



Disable function when missing PIN code or card key

Automatically deleting old PIN code or card key information when registering new one.



Random security coding function

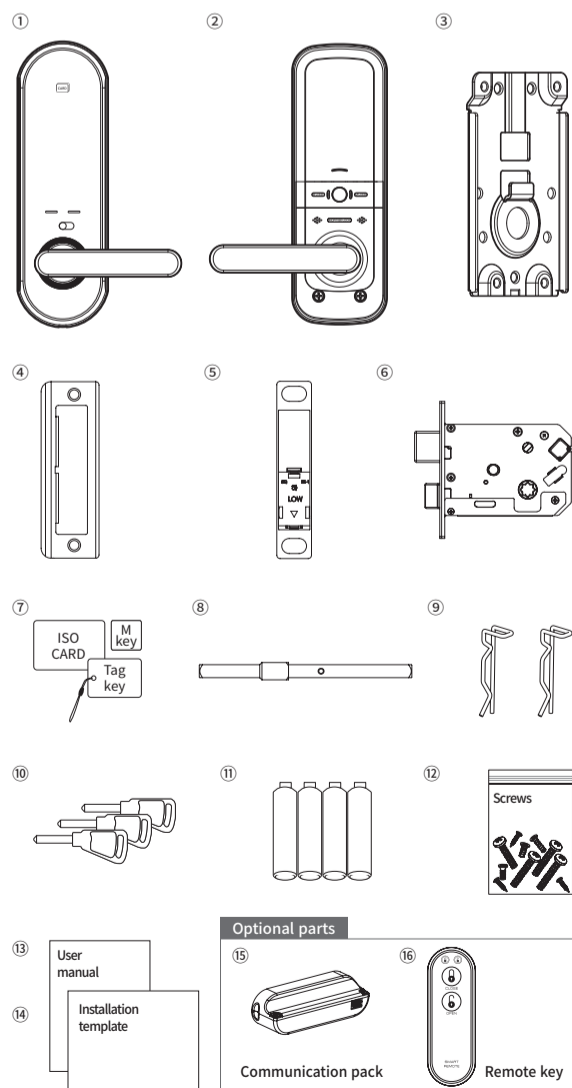
When you enter your home with other people, you may not want to show PIN code to them. In this case, you may press any numbers randomly without limitation and then enter your PIN code at the end.



Auto lock function

When the door is closed, it will be locked automatically in auto lock mode.

Product composition and components



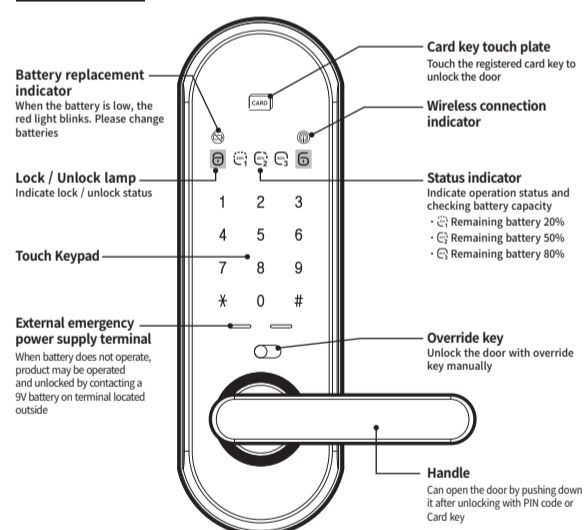
Name	Product specification	Remark
① Front Ass'y	84mm(W) X 260mm(H) X 21mm(D)	Including rubber pad
② Back Ass'y	82mm(W) X 242mm(H) X 34mm(D)	
③ Back bracket	70mm(W) X 119.5mm(H) X 6.6mm(D)	
④ Strike	35mm(W) X 106mm(H) X 6.3mm(D)	
⑤ Strike housing	21mm(W) X 106mm(H) X 19.5mm(D)	
⑥ Mortise lock	105.4mm(W) X 110mm(H) X 25mm(D)	
⑦ Card key	ISO card, Tag key, Mobile tag key	
⑧ Handle shaft	96mm(W) X 8mm(H) X 8mm(D)	
⑨ Handle shaft clip	2 EA	
⑩ Override key	3 EA	
⑪ Battery	1.5V 'AA' Size LR6 Alkaline, 4EA(DC 6V)	
⑫ Screws	1 SET	
⑬ User manual	Main User manual	
⑭ Installation template	Using for making hole at the door	
⑮ Communication pack	Communication pack	Optional
⑯ Remote key	Remote key	Optional
※ Installation condition	Door thickness 35~50mm	

Factory setting

Item	Setting Status	Ref. page
Auto/Manual lock mode	[Auto-lock]	9
Beep sound level (1~8 level)	8 level	8
Factory setting PIN code	123456	-

Name and function of each part

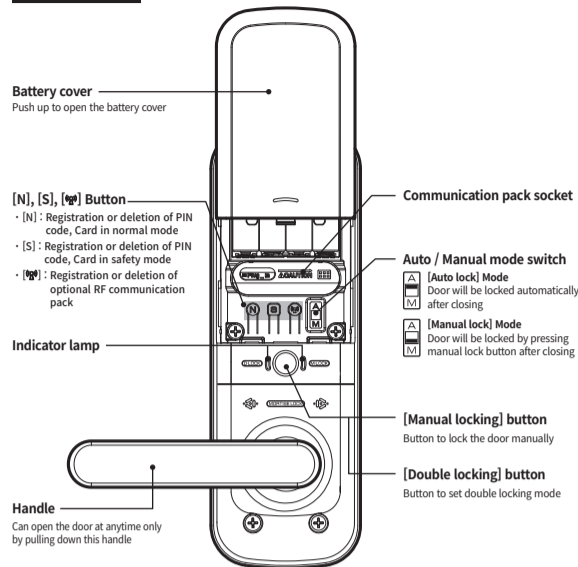
1. Front Ass'y



How to apply external power in the emergency



2. Back Assy



How to replace batteries

If battery lamp is blinking RED and alarm sounds, open battery cover and replace all batteries, 6V(1.5V "AA" size LR6 Alkaline)

Description shortcut icons

[N] : [N] button	[C] : PIN code	[A] : Trespass alarm
[S] : [S] button	[CARD] : Card key	[Smartphone] : Smartphone application
[*] : [*] button	[9V] : 9V alkaline battery(6LF22)	[XXXX] : Authentication code
[#] : [#] button	[UC] : User code	[6] : Open button on application
[Touch] : Touch the front pad	[MC] : Manager code	
[Communication] : [Communication function] button	[RC] : Registration new code	
	[RANDOM CODE] : Random code	

※ Normal mode : [N] button / Safety mode : [S] button

Additional function

How to control voice guide volume									
Min. volume									1
Mid. volume	[Touch]	[#]	[C] or [CARD]	[#]	1	2			
Max. volume									3
Guest PIN code (Temporary use)									
REG.	[Touch]	[#]	[C] or [CARD]	[#]	2	RC	[#]	RC	[#]
How to control operation volume									
Vol. up	[Touch]	[#]	[C] or [CARD]	[#]	3	9	*		
Vol. down									7
Status checking guide									
Voice guide	[Touch]	[#]	[C] or [CARD]	[#]	4				
Check battery capacity									
Checking the battery	[Touch]	[#]	[C] or [CARD]	[#]	5				
Warning function against illegal entry or hacking									
Operate	Wrong PIN code three times / unregistered Card three times [Alarm]								
Warning alarm function against trespass by force									
PIN code	[Touch]	[C]	[*]						[CARD]

How to use random security coding function

Usage	[Touch]	[RANDOM CODE]	[C]	[*]					
-------	---------	---------------	-----	-----	--	--	--	--	--

Auto lock function / Auto reloading system

1. Auto lock function

When the door is closed, it will be locked automatically.

2. Auto reloading system

If the door is not opened within 7 seconds after input PIN code or card key it will be relocked automatically to protect user's property.

How to unlock / lock from outside

How to unlock from outside									
PIN code	[Touch]	[C]	[*]						[CARD]
Card key	[CARD]								
How to unlock from outside without disturbing others (Mute function)									
PIN code	[Touch]	[3 Sec]	[OFF]	[C]	[*]				
Card key	[Touch]	[3 Sec]	[OFF]	[CARD]					
How to lock [Auto lock / Manual lock] from outside									
Auto lock	[Touch]	[Lock]							※ If the door is not closed correctly, warning sound will go off. Please check and confirm the door closing status.
Manual lock	[Touch]	[0]	[Lock]						
How to set auto-locking / manual-locking									
Auto lock	[A]								In Auto lock mode, door will be locked automatically. In Manual lock mode, door will be locked by pressing manual lock button.
Manual lock	[M]								* As the auto locking function does not work in the manual lock mode, please make sure to check the door is locked when you leave.

How to lock from inside

① Note

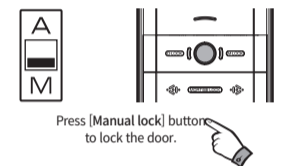
• Before closing the door, make sure that deadbolt is not extrude.

1. In auto lock mode



When the door is closed, door is locked with beep sound and voice guide automatically.

2. In manual lock mode



Press [Manual lock] button to lock the door.

How to open from indoor



"PANIC RELEASE TYPE"

Just pulling down the handle to unlock the door anytime.

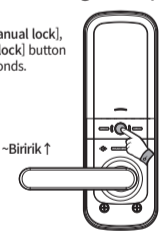
What's "PANIC RELEASE"?

Door can be opened with simple action of pulling down the handle. Even the door lock is out of order, you can escape easily in the emergency such as fire.

How to set double locking function

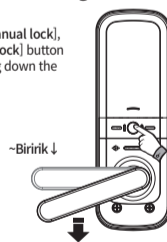
1. [Double locking] Set-up

Press [Manual lock], [Double lock] button for 3 seconds.



2. [Double locking] Cancel

Press [Manual lock], [Double lock] button or pulling down the handle.



① Note

- Please confirm that the door is properly closed. Double locking is available when the door is closed.
- Even in [Double lock] mode, it is available to open the door from inside by pulling down the handle.
- Pushing down the handle from the inside will automatically turn off Double locking mode.
- If the sound is set to mute only indicator lamp is blinking.

How to change Normal mode / Safety mode

- Normal mode: ideal for new users or low security environments
- Safety mode: higher security level via use of a manager PIN code. Provides individual registration and deletion function

[N] : [N] button	[S] : [S] button	[CARD] : Card key							
[UC] : User code	[MC] : Manager code	[RC] : Registration new code							
How to change from normal mode to safety mode									
	1	2	3	4	5	6	7	8	9
Safety mode	[3 Sec]	[UC]	[#]	[MC]	[#]	[MC]	[#]		
How to change from safety mode to normal mode									
Normal mode	[3 Sec]	[MC]	[#]	[UC]	[#]	[UC]	[#]		

Normal mode

• PIN code : 10 entries (6-12 digits) / Card key : 50 entries

[N] : [N] button	[RC] : Registration new code	[CARD] : Card key							
	1	2	3	4	5	6	7	8	9
REG.	PIN code	[N]	1	4	[RC]	[*]	...	[*]	
	Card key	[N]	1	5	[CARD]	...	[CARD]	[*]	
DEL.	All Card key	[N]	2	5					

※ Repeat highlighted part of diagram above for continuous registration.

※ Keep the door open while you register PIN code / Card keys to prevent yourself from accidentally getting locked out.

Safety mode

⚠ Warning : Please do not forget manager PIN code.

If you forget this number, please contact to your local agency.

Keep the door open while you register PIN code / Card keys to prevent yourself from accidentally getting locked out.

• PIN code: 10 entries (6-12 digits) / Card key: 50 entries

Safety mode									
	1	2	3	4	5	6	7	8	9
REG.	PIN code	[S]	1	4	[MC]	[#]	[RC]	[*]	...
	Card key	[S]	1	5	[MC]	[#]	[CARD]	[#]	[*]
DEL.	All Card key	[S]	2	5	[MC]	[#]			
	Individual Card key	[S]	3	5	[MC]	[#]	[CARD]	[#]	[*]
Safety mode (Manager)									
Change	Manager code	[S]	8	4	[MC]	[#]	[RC]	[#]	[#]
REG.	Manager Card key	[S]	8	5	[MC]	[#]	[CARD]	[*]	
DEL.	All manager Card key	[S]	8	6	[MC]	[#]	5		

※ Repeat highlighted part for continuous registration or deletion.

Communication pack / Remote key(optional)

Wireless communication device installation

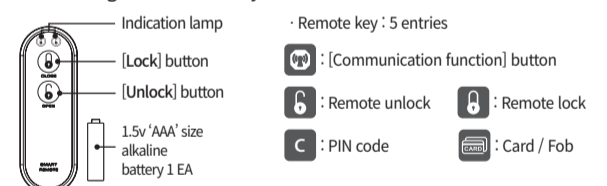


① Note

• Please insert the device in the correct position.

1. Open the battery cover on the lock and remove the batteries.
2. Plug in the wireless communication device.
3. Insert the batteries back into the lock.
4. Audible melody will sound if successful.

How to register remote key & to unlock or lock



How to register / delete remote key

REG.	Remote key	[3 Sec]	1	[C] or [CARD]	[#]	[6] or [6]	[*]		
DEL.	All remote key	[3 Sec]	2	[C] or [CARD]	[#]				

How to lock / unlock using remote key

Unlock	[6]								
Lock	[6]								

※ Repeat highlighted part for continuous registration.

※ 1 EA battery is equipped.

※ To replace battery, open the back cover.

Using the Schlage Base (optional)

※ Communication packs(Mobile Access) must be purchased separately.

Connecting with the mobile app

1. Install the Schlage Base via the APP Store or Google Play.
2. Activate the app (new user must register account first) and press the "🔒" icon at the top of the screen and select a door lock from the list.
3. Connect the door lock by following the guide provided in the app.

On the lock:

Press and hold the [RF] button for 3 seconds.

Then, press 1 on the keypad and enter the passcode followed by the [#] button.

Disconnecting the app from the door lock

1. Press and hold the [RF] button for 3 seconds.
2. Then, press 2 on the keypad and enter the passcode followed by the [#] button.