

S-7100

USER MANUAL

▲ Notice

Please read this manual before installation and operation.

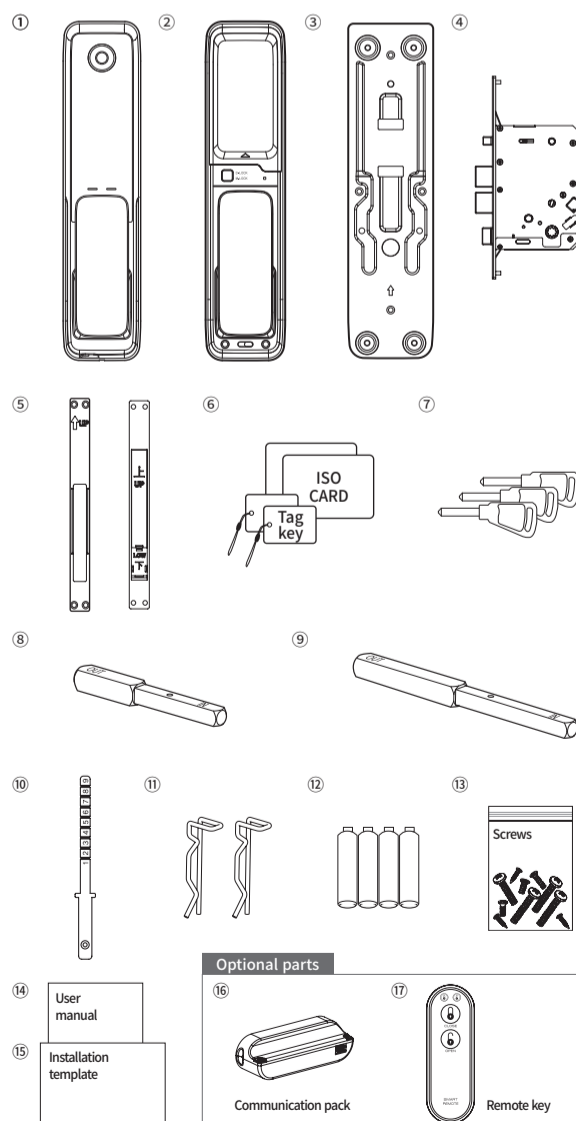
⚠ Safety precautions

- Do not disassemble or alter the lock. Disassembling the door lock may damage the product. Damages to the product caused by unauthorized persons may void the warranty.
- If the product generates harmful gases and smoke. Please remove the batteries immediately from the product, if you do not take this step immediately, the product may suffer severe damage.
- Please keep the product away from water or any liquids. If the product is exposed to water or liquids, please wipe the moisture off with a soft cloth. If moisture or foreign materials penetrate the product, remove the batteries immediately.
- Please check the batteries every 6 months for leaks/cleanliness. If leakage is discovered, please wipe out with a dry cloth and replace with new batteries. In case of exposure to leakage, wash affected skin area with soap and water immediately.
- Do not clean the product with flammable materials such as alcohol, benzene or thinners. Such materials may damage the surface of the lock or cause a fire.
- Batteries should not be exposed directly to heat source or submerged in water, because they may leak or explode, resulting in severe damage. Do not use damaged batteries.
- Do not allow the battery electrodes to contact metals such as keys, as the battery may overheat, causing explosion or severe damage.
- Please do not close the door with the deadbolt in the locked position. It may damage the product or cause a malfunction.
- Do not force to pull the front cover. It may damage the product or cause a malfunction.
- Do not mix old and new batteries, or use different types of batteries. The battery life is getting shorter and it may cause leaks or explosion.
- Please do not hang the heavy things or bag, etc on the handle. It may damage the handle or cause a malfunction.

Product features

- Four way solution (Fingerprint, PIN code, Card key, Override key)**
- Free-direction mortise lock type**
The product can be installed in a left or right handed configuration.
- Normal mode/Safety mode**
 - Normal mode: easy to use for normal user.
 - Safety mode: high security mode with manger function added, provides individual register and delete function which is not provided in normal mode.
- High temperature warning**
If a high temperature is detected that may cause a fire, the alarm will ping sound for safety reasons. (Working temperature : -15~55°C, Sensor working temperature(high) : 60°C±10°C)
- Random security coding function**
When you enter your home with other people, you may not want to show PIN code to them. In this case, you may press any numbers randomly without limitation and then enter your PIN code at the end.
- Prevent mischief & hacking**
After multiple incorrect attempted entries an alarm will sound and all the functions of the lock will be suspended for three minutes. The alarm activated after three incorrect PIN/card entries.
- Trespass alarm function**
When the door is opened by force an alarm will sound.
- Auto relock function**
If users do not open the door after unlocking the device it will lock itself automatically.
- Double lock function**
When double lock function is activated, the door cannot be opened from the outside, even with the registered card, PIN code or fingerprint. Override key can still be used.
- One touch mute function**
Door will not emit any sound when mute is activated.

Product composition and components



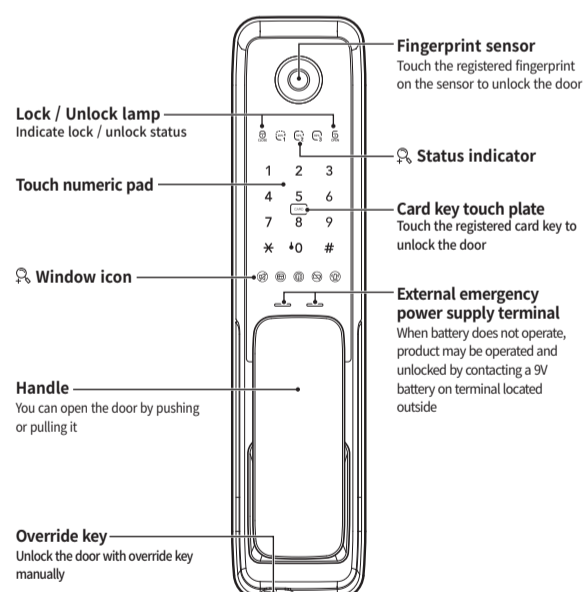
Name	Product specification	Remark
① Front Ass`y	88mm(W) X 385mm(H) X 40mm(D)	Including rubber pad
② Back Ass`y	88mm(W) X 375mm(H) X 44mm(D)	
③ Back bracket	81mm(W) X 319mm(H) X 8.7mm(D)	
④ Mortise lock	105.4mm(W) X 240mm(H) X 24mm(D)	
⑤ Strike	24mm(W) X 240mm(H) X 4.5mm(D)	
⑥ Card key	ISO card, Tag key	
⑦ Mechanical key	3 EA	
⑧ Handle shaft	70.5mm(W) X 8mm(H) X 8mm(D)	40~50mm Door
⑨ Handle shaft(M)	101.7mm(W) X 8mm(H) X 8mm(D)	70~90mm Door
⑩ Key Shaft	1 EA	
⑪ Handle shaft stop-ring	2 EA	
⑫ Battery	6V (1.5V 'AA' Size LR6 Alkaline, 4ea)	
⑬ Screws	1 set	
⑭ User manual	English	Including warranty form
⑮ Installation template	Using for making hole at the door	
⑯ Communication pack	Communication pack	Optional
⑰ Remote key	Remote key	Optional
※ Installation condition	Door thickness 40~80mm	

Factory setting

Item	Setting Status	Ref.page
Auto/Manual lock mode	[Auto lock]	9
Normal mode / Safety Mode	Normal mode	10-11
Voice guide volume (1~3 level)	3 level [Maximum]	8
Beep sound level (1~8 level)	8 level	8
Factory setting PIN code	123456	-

Name and function of each part

1. Front Ass`y



Window icon

- Mute function
- Double lock function
- Wireless interlock
- Battery replacement indicator
- Trespass alarm function

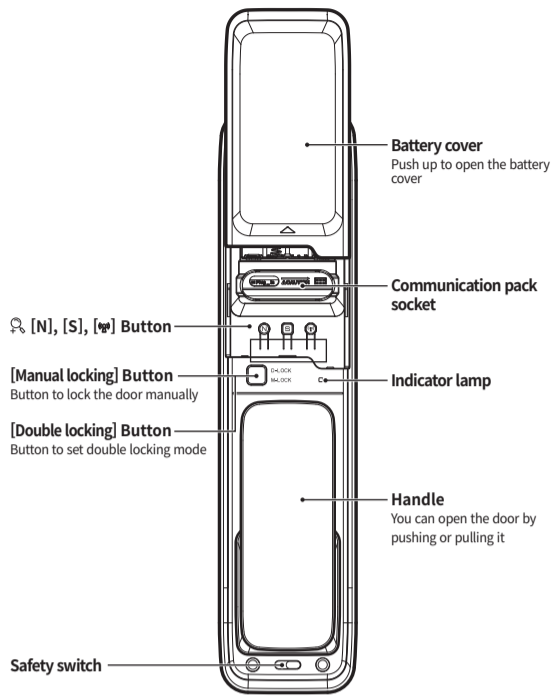
Status indicator

- Indicate operation status and checking battery capacity.
- Remaining battery 20%
- Remaining battery 50%
- Remaining battery 80%

How to apply external power in the emergency



2. Back Ass'y



How to replace batteries

If battery lamp is blinking RED and alarm sounds, open battery cover and replace all batteries, 6V(1.5V "AA" size LR6 Alkaline)

How to use [Safety switch]

Operation of the handle inside is restricted for preventing outside intrusion.



Description shortcut icons

[N] : [N] button	C : PIN code	[Trespass alarm]
[S] : [S] button	[CARD] : Card key	[Unlock]
[*] : [*] button	[BATT] : 9V alkaline battery(6LF22)	[Lock]
[#] : [#] button	UC : User code	[Fingerprint]
[Touch the front pad]	MC : Manager code	
[Communication function] button	RC : Registration new code	
	[RAN DOM CODE] : Random code	

※ Normal mode : [N] button / Safety mode : [S] button

Additional function

How to control voice guide volume									
Min. volume									1
Mid. volume	[Touch]	[#]	C or [CARD]	[#]					2
Max. volume									3
Guest PIN code (Temporary use)									
REG.	[Touch]	[#]	C or [CARD]	[#]	2	RC	[#]	RC	[#]
How to control operation volume									
Vol. up	[Touch]	[#]	C or [CARD]	[#]	3			9	*
Vol. down								7	
Status checking guide									
Voice guide	[Touch]	[#]	C or [CARD]	[#]	4				
Check battery capacity									
Checking the battery	[Touch]	[#]	C or [CARD]	[#]	5				
Warning function against illegal entry or hacking									
Operate									[Trespass alarm]
	Wrong PIN code three times / unregistered Card three times / unregistered Fingerprint five times								
Warning alarm function against trespass by force									
PIN code	[Touch]	C	[*]						
Card key		[CARD]							
Fingerprint									[Touch]

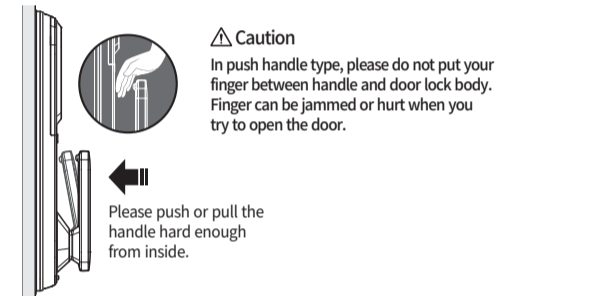
How to use random security coding function

Usage	[Touch]	[RAN DOM CODE]	C	[*]	[Lock]															
-------	---------	----------------	---	-----	--------	--	--	--	--	--	--	--	--	--	--	--	--	--	--	--

How to unlock / lock from outside

How to unlock from outside																				
PIN code	[Touch]	C	[*]	[Lock]																
Card key		[CARD]																		
Fingerprint																				[Touch]
How to unlock from outside without disturbing others (Mute function)																				
PIN code	[Touch]	[3-Sec]	[OFF]	C	[*]	[Lock]														
Card key		[3-Sec]	[OFF]	[CARD]		[Lock]														
How to lock [Auto lock / Manual lock] from outside																				
Auto lock	[Touch]	[Lock]																		
Manual lock	[Touch]	[0]	[Lock]																	
How to set auto lock / manual lock																				
Auto lock	[Touch]	[#]	C or [CARD]	[#]	8															5
Manual lock																				6

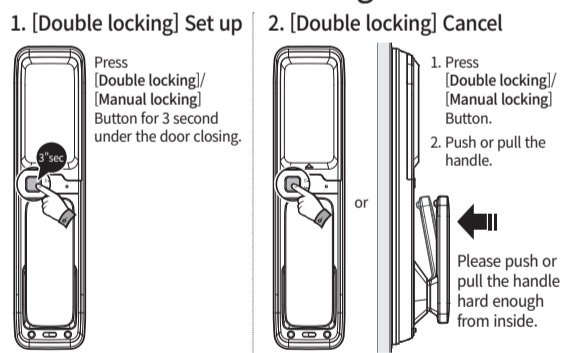
How to lock from inside



Auto lock function / Auto relocking system

- 1. Auto lock function**
When the door is closed, it will be locked automatically.
- 2. Auto relocking system**
If the door is not opened within 7 seconds after input PIN code or Card key it will be relocked automatically to protect user's property.

How to set double locking function



- Note**
- Please confirm that the door is properly closed. Double locking is available when the door is closed.
 - Even in [Double locking] mode, it is available to open the door from inside by push or pull down the handle.
 - Push or pull down the handle from the inside will automatically turn off Double locking mode.
 - If the sound is set to mute only indicating lamp is blinking.

How to change Normal mode / Safety mode

- Normal mode: ideal for new users or low security environments
- Safety mode: higher security level via use of a manager PIN code. Provides individual registration and deletion function

[N] : [N] button	[S] : [S] button	[CARD] : Card key	[Touch]						
UC : User code	MC : Manager code	RC : Registration new code							
How to change from normal mode to safety mode									
Safety mode	[3-Sec]	UC	[#]	MC	[#]	MC	[#]		
How to change from safety mode to normal mode									
Normal mode	[3-Sec]	MC	[#]	UC	[#]	UC	[#]		

Normal mode

· PIN code: 10 EA (6-12 digits) / Card key: 50 EA / Fingerprint : 100 EA

Normal mode									
REG.	PIN code	[N]	1	4	RC	[*]	...	[*]	
	Card key	[N]	1	5	[CARD]	...	[CARD]	[*]	
	Fingerprint	[N]	1	6	[Touch]	3 times	...	[*]	
DEL.	All Card key	[N]	2	5					
	All Fingerprint	[N]	2	6					

※ Repeat highlighted part of diagram above for continuous register.
 ※ Keep the door open while you register PIN code / Card keys to prevent yourself from accidentally getting locked out.

Safety mode

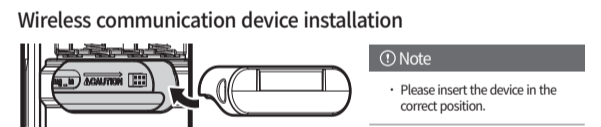
△ Warning : Please do not forget manager PIN code.
 If you forget this number, please contact to your local agency.
 Keep the door open while you register PIN code / Card keys to prevent yourself from accidentally getting locked out.

· PIN code: 10 EA (6-12 digits) / Card key: 50 EA / Fingerprint : 100 EA

Safety mode											
REG.	PIN code	[S]	1	4	MC	[CARD]	[#]	RC	[*]	[*]	
	Card key	[S]	1	5	MC	[CARD]	[#]	Card Registration Number(2digits)	[#]	[CARD]	[*]
	Fingerprint	[S]	1	6	MC	[CARD]	[#]	Fingerprint Registration Number(3 digits)	[#]	[Touch]	3 times
DEL.	All Card key	[S]	2	5	MC	[CARD]	[#]				
	Individual Card key	[S]	3	5	MC	[CARD]	[#]	Card Registration Number(2digits)	[#]	[*]	
	All Fingerprint	[S]	2	6	MC	[CARD]	[#]				
	Individual Fingerprint	[S]	3	6	MC	[CARD]	[#]	Fingerprint Registration Number(3 digits)	[#]	[*]	
Safety mode (Manager)											
Change	Manager code	[S]	8	4	MC	[CARD]	[#]	RC	[#]	RC	[#]
REG.	Manager Card key	[S]	8	5	MC	[CARD]	[#]	[CARD]	[#]	[*]	
DEL.	All manager Card key	[S]	8	6	MC	[CARD]	[#]	5			

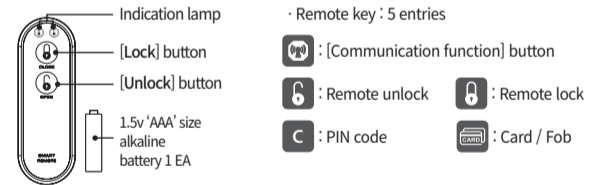
※ Repeat highlighted part for continuous register or delete.

Communication pack / Remote key(optional)



- Note**
- Please insert the device in the correct position.
- Open the battery cover on the lock and remove the batteries.
 - Plug in the wireless communication device.
 - Insert the batteries back into the lock.
 - Audible melody will sound if successful.

How to register remote key & to unlock or lock



How to register / delete remote key									
REG.	Remote key	[3-Sec]	1	C or [CARD]	[#]	6	or [Lock]	[*]	
DEL.	All remote key	[3-Sec]	2	C or [CARD]	[#]				
How to lock / unlock using remote key									
Unlock	[6]								
Lock	[Lock]								

※ Repeat highlighted part for continuous registration.
 ※ 1 EA battery is equipped.
 ※ To replace battery, open the back cover.

Using the Schlage Base (optional)

※ Communication packs(Mobile Access) must be purchased separately.

Connecting with the mobile app

- Install the Schlage Base via the APP Store or Google Play.
- Activate the app (new user must register account first) and press the "+" icon at the top of the screen and select a door lock from the list.
- Connect the door lock by following the guide provided in the app.

On the lock:

Press and hold the [Mute] button for 3 seconds.
 Then, press 1 on the keypad and enter the passcode followed by the [#] button.

Disconnecting the app from the door lock

- Press and hold the [Mute] button for 3 seconds.
- Then, press 2 on the keypad and enter the passcode followed by the [#] button.